



Adriatic Metals

DELIVERING A WORLD CLASS PROJECT

Mines & Money Global
1-3 September 2020

ASX: ADT
LSE: ADT1



IMPORTANT NOTICE & DISCLAIMER

The information contained in this presentation is in summary form and does not necessarily contain all information which may be material to the making of a decision in relation to Adriatic Metals Plc ("Adriatic" or the "Company"). This presentation should not form the basis of, or be relied on in connection with, any contract or investment decision in relation to any securities.

The information in this presentation is being furnished to you solely for your information and the contents of this presentation shall not be taken as any form of commitment on the part of any person to proceed with any transaction and will not form the basis of any contract.

This presentation does not involve or imply a recommendation or a statement of opinion in respect of whether to buy, sell or hold securities in the Company. The securities issued by the Company are considered speculative and there is no guarantee that they will make a return on the capital invested, that dividends will be paid on the shares or that there will be an increase in the value of the shares in the future.

The information contained in this presentation has not been independently verified. The Company does not make any representation or warranty, express or implied, as to the fairness, accuracy, correctness or completeness of the information, opinions and conclusions contained in this presentation.

Recipients of this presentation must make their own investigations and inquiries regarding all assumptions, risks, uncertainties and contingencies which may affect the future operations of the Company or the Company's securities.

The Company does not purport to give financial or investment advice. No account has been taken of the objectives, financial situation or needs of any recipient of this document.

This presentation is not intended to be, and is not, a prospectus, product disclosure statement, offering memorandum or private placement memorandum for the purpose of Chapter 6D of the Corporations Act 2001. To the maximum extent permitted by law, the Company, its officers, employees and advisers expressly disclaim any responsibility for and make no warranties or representations as to the accuracy or completeness of the material contained in this presentation and exclude all liability whatsoever (including in negligence) for any loss or damage which may be suffered by any person as a consequence of any information in this presentation or any error or omission there from. The Company accepts no responsibility to update any person regarding any inaccuracy, omission or change in information in this presentation or any other information made available to a person nor any obligation to furnish the person with any further information. The presentation has not been approved in the United Kingdom by the Financial Conduct Authority (the "FCA") and does not constitute, or form part of, an admission document, listing particulars, a prospectus or a circular relating to the Company.

The content of information contained in the presentation has not been approved by an authorised person within the meaning of the Financial Services and Markets Act 2000 ("FSMA"). Reliance upon this presentation for the purpose of engaging in any investment activity may expose person relying on it individual to a significant risk of losing all of the property or other assets invested. If any person is in any doubt as to the contents of this presentation, they should seek independent advice.

The presentation is not a prospectus and should not be considered as an offer or invitation to acquire shares in Adriatic or any other financial product in any jurisdiction and neither this presentation nor anything in it shall form any part of any contract for the acquisition of Adriatic shares. The distribution of this presentation in jurisdictions outside the United Kingdom, Australia and New Zealand may be restricted by law and you should observe any such restrictions. In particular, this presentation is not an offer to sell, or a solicitation of an offer to buy, securities in the United States. Any shares described in this presentation have not been, and will not be, registered under the US Securities Act of 1933 and may not be offered or sold in the United States except in transactions exempt from, or not subject to, the registration of the US Securities Act and applicable US state securities law. See section captioned "International Offer Restrictions".

This presentation does not constitute an advertisement or a public offer of securities in any jurisdiction.

Note, all figures are expressed in Australian dollars unless otherwise stated.

The information in this presentation which relates to Exploration Results is based on information compiled by Mr Phillip Fox, who is a member of the Australian Institute of Geoscientists (AIG). Mr Fox is a consultant to Adriatic, and has sufficient experience relevant to the style of mineralisation and type of deposit under consideration and to the activity he is undertaking to qualify as a Competent Person as defined in the 2012 Edition of the "Australian Code of Reporting of Exploration Results, Mineral Resources and Ore Reserves". Mr Fox consents to the inclusion in this report of the matters based on that information in the form and context in which it appears.

You should be aware that the Company has its securities listed on the ASX and are also admitted to the Standard Segment of the Official List of the Financial Conduct Authority and to trading on the Main Market of the London Stock Exchange ("LSE").

The Company is required to report reserves and resources in accordance with JORC 2012. You should note that while the Company's reserve and resource estimates comply with the JORC 2012, they may not comply with the relevant guidelines in other countries and, in particular, do not comply with (i) National Instrument 43-101 (Standards of Disclosure for Mineral Projects) of the Canadian Securities Administrators and (ii) Industry Guide 7, which governs disclosures of mineral reserves in registration statements filed with the US Securities and Exchange Commission. Information contained in this presentation describing the Company's mineral deposits may not be comparable to similar information made public by companies subject to the reporting and disclosure requirements of Canadian or US securities laws. In particular, Industry Guide 7 does not recognise classifications other than proven and probable reserves and, as a result, the SEC generally does not permit mining companies to disclose their mineral resources in SEC filings. You should not assume that quantities reported as "resources" will be converted to reserves under the JORC Code or any other reporting regime or that the Company will be able to legally and economically extract them.

The information in this presentation is subject to change without notice. Subject to any obligations under applicable law, the Company does not undertake any obligation to update any information in this presentation.

This presentation contains certain statements which may constitute "forward looking statements". The forward looking statements in this presentation apply only as at the date of this presentation. Any forward looking statements in this presentation involve subjective judgment and analysis and are subject to significant uncertainties, risks and contingencies and other factors, including the risks described in this presentation under "Key risks". Such risks may be outside the control of, and are unknown to the Company and its officers, employees, agents or associates. Forward-looking statements involve known and unknown risks, uncertainties and other factors which may cause the actual results, performance or achievements of Adriatic and/or its subsidiaries to be materially different from any future results, performance or achievements expressed or implied by the forward-looking statements. Such factors include, among others, general business, economic, competitive, political and social uncertainties; the actual results of current exploration activities; conclusions of economic evaluations; changes in project parameters as plans continue to be refined; possible variations of ore grade or recovery rates; failure of plant, equipment or processes to operate as anticipated; accident, labour disputes and other risks of the mining industry; and delays in obtaining governmental approvals or financing or in the completion of development or construction activities. Although Adriatic has attempted to identify important factors that could cause actual actions, events or results to differ materially from those described in forward-looking statements, there may be other factors that could cause actions, events or results to differ from those anticipated, estimated or intended. Forward-looking statements contained herein are made as of the date of this presentation and Adriatic disclaims any obligation to update any forward looking statements, whether as a result of new information, future events or results or otherwise. There can be no assurance that forward-looking statements will prove to be accurate, as actual results and future events could differ materially from those anticipated in such statements. Adriatic undertakes no obligation to update forward-looking statements if circumstances or management's estimates or opinions should change. Accordingly, the reader is cautioned not to place undue reliance on forward-looking statements.

News releases, presentations and public commentary made by Adriatic and its officers may contain certain statements and expressions of belief, expectation or opinion which are forward looking statements, and which relate, inter alia, to interpretations of exploration results to date and the Company's proposed strategy, plans and objectives or to the expectations or intentions of the Company's directors. Such forward-looking and interpretative statements involve known and unknown risks, uncertainties and other important factors beyond the control of the Company that could cause the actual performance or achievements of the Company to be materially different from such interpretations and forward-looking statements. Accordingly, the reader should not rely on any interpretations or forward-looking statements; and save as required by the exchange rules of the ASX and LSE or by applicable laws, the Company does not accept any obligation to disseminate any updates or revisions to such interpretations or forward-looking statements. The Company may reinterpret results to date as the status of its assets and projects changes with time expenditure, metals prices and other affecting circumstances.

Since the release of the Scoping Study and the Maiden Resource Estimate, the Company confirms that it is not aware of any new information or data that materially affects these estimates.



CREATING A BALKAN REGIONAL LEADER

ADRIATIC'S POSITION AS LEADING BALKAN POLYMETALLIC EXPLORER AND DEVELOPER

ACQUISITION OF TETHYAN RESOURCES

- Acquisition to add two exciting brownfield projects
- Creates diversified Balkans regional leader
- Total land package of 301km² across Bosnia and Serbia

RAPID DEVELOPMENT PATH IN SERBIA

- Kizevak and Sastavci projects past producers
- Significant historical exploration data available
- Targeting JORC compliant resource by end Q1 2021



DIVERSIFIED ATTRACTIVE JURISDICTIONS

- Excellent infrastructure endowment in both Bosnia & Serbia
- Extensive access to rail networks linking European smelters and the seaborne market
- Established mining codes, with clear permitting process

WORLD CLASS BOSNIAN PROJECTS

- High NPV, high margin, high return, low capex Vares Project
- High grade resource
- Excellent metallurgy
- Proven mining and processing methodology

EXCITING EXPLORATION POTENTIAL

- Growing resource inventory in Bosnia
- Extensive regional land holding in both countries
- Extensive data to support new concession applications

ROBUST FUNDING POSITION

- Robust balance sheet
- Fully funded through Vares BFS
- Funding to progress Kizevak and Sastavci immediately
- Confirmation drilling programmes completed in both Bosnia & Serbia

PROVEN TEAM

- Focused team with the experience to deliver the projects
- Significant management ownership
- Experienced and respected in-country teams



RUPICE HIGH GRADE SILVER DEPOSIT

UPDATED JORC MINERAL RESOURCE EXPANDS TONNAGE BY 32%

UPDATED JORC RESOURCES

- Updated JORC 2012 Resource of 12.0Mt¹ - 79% of the Mineral Resource in the Indicated Resources category
- 32% increase in tonnes from July 2019 Maiden JORC Resource

MINERALISATION OPEN

- Mineralisation remains open towards the north and down-dip to the south
- Defined strike length of 650m, with average true width thickness of c.20m.

ADVANCEMENT UNDERWAY

- Updated MRE will provide the foundation to the PFS, which will incorporate ongoing metallurgical test work results and mining studies designed to optimise and improve the planned development configuration of the project compared with that outlined in the November 2019 Scoping Study.
- Exploitation permit application advanced and expected in Q1 2021

JORC Classification	Tonnes (Mt)	Ag (g/t)	Au (g/t)	Zn (%)	Pb (%)	Cu (%)	Sb (%)	BaSO ₄ (%)
Indicated	9.5	176	1.6	4.9	3.1	0.5	0.2	29
Inferred	2.5	49	0.3	0.9	0.7	0.2	0.1	9
Total	12.0	149	1.4	4.1	2.6	0.5	0.2	25





THE WORLD CLASS VARES PROJECT

THE ECONOMICALLY VIABLE VARES PROJECT CONSISTS OF TWO HIGH GRADE POLYMETALLIC DEPOSITS

CAPTIVATING ECONOMICS

US\$916.6m
NPV₈

107%
IRR

US\$178.4m*
CAPEX

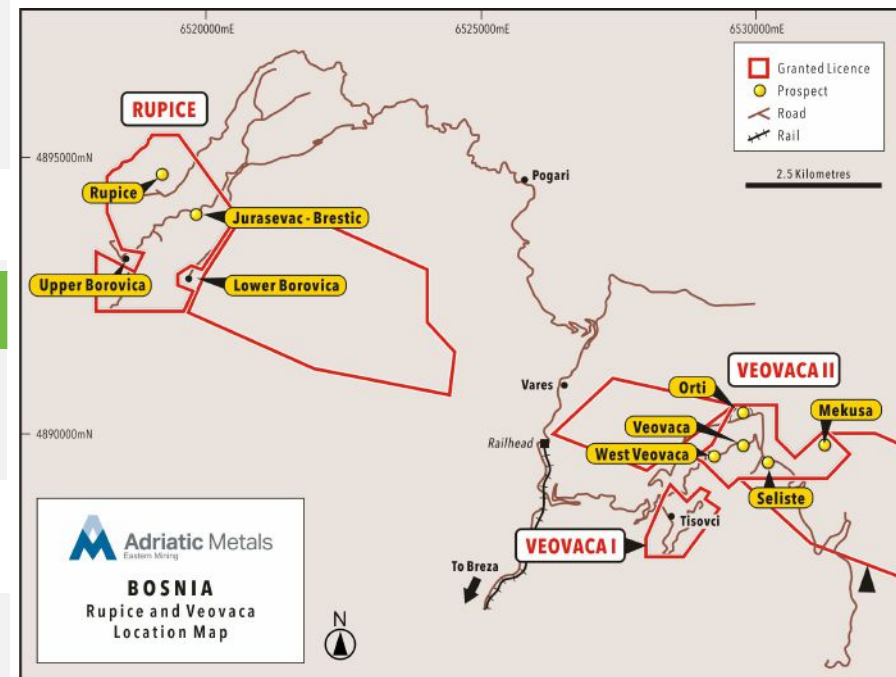
IMPRESSIVE RESOURCE INVENTORY

JORC Classification	Tonnes (Mt)	Au (g/t)	Ag (g/t)	Zn (%)	Pb (%)	Cu (%)	BaSO ₄ (%)
Rupice *	9.4	1.8	183	5.1	3.3	0.6	31
Veovaca	7.4	0.1	41	1.4	0.9	-	13
Total	16.8	1.01	120	3.5	2.2	0.3	23.2

* 2019 MRE for Rupice used as basis for Scoping Study – MRE Updated in Aug 2020. Details on previous slide

FULLY FINANCED

- Funded to a construction decision including completion of the Feasibility Study, ESIA and all permitting activities
- Well capitalised following recent A\$25m institutional placement

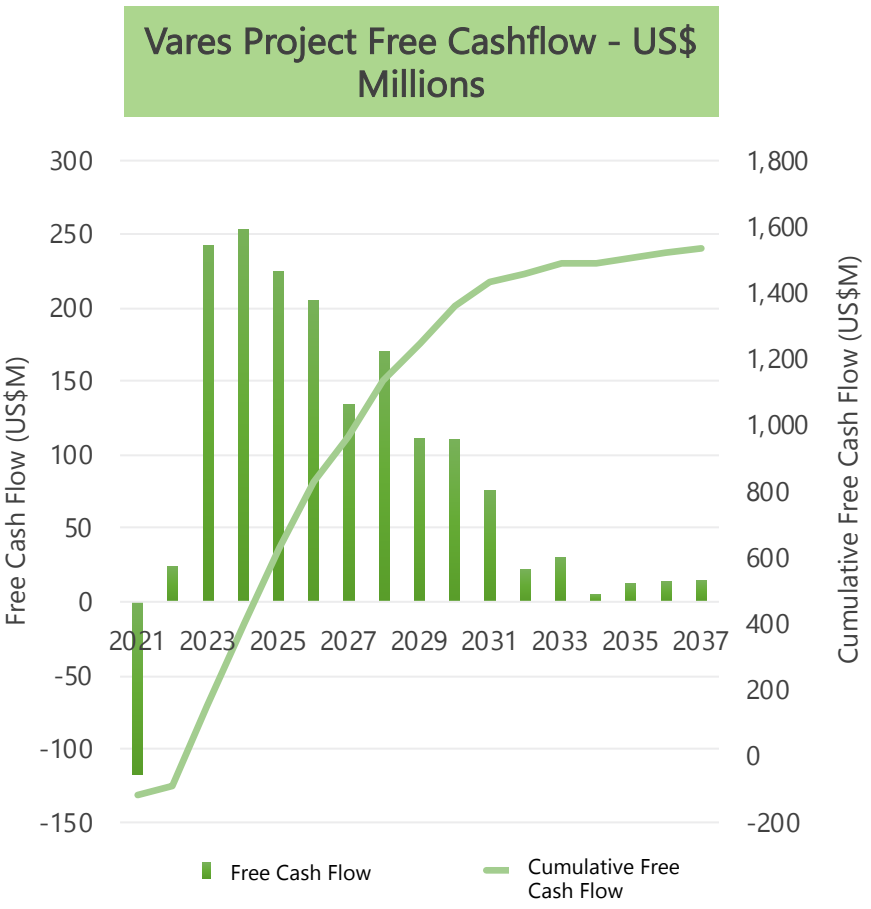


Following the release of the Scoping Study on 19 November 2019 the Company confirms all material assumptions underpinning the forecast financial information continue to apply and have not materially changed. Following the release of the Maiden Resource Estimate on 23 July 2019, the Company confirms all material assumptions and technical parameters underpinning the estimates in the relevant market announcement continue to apply and have not materially changed.

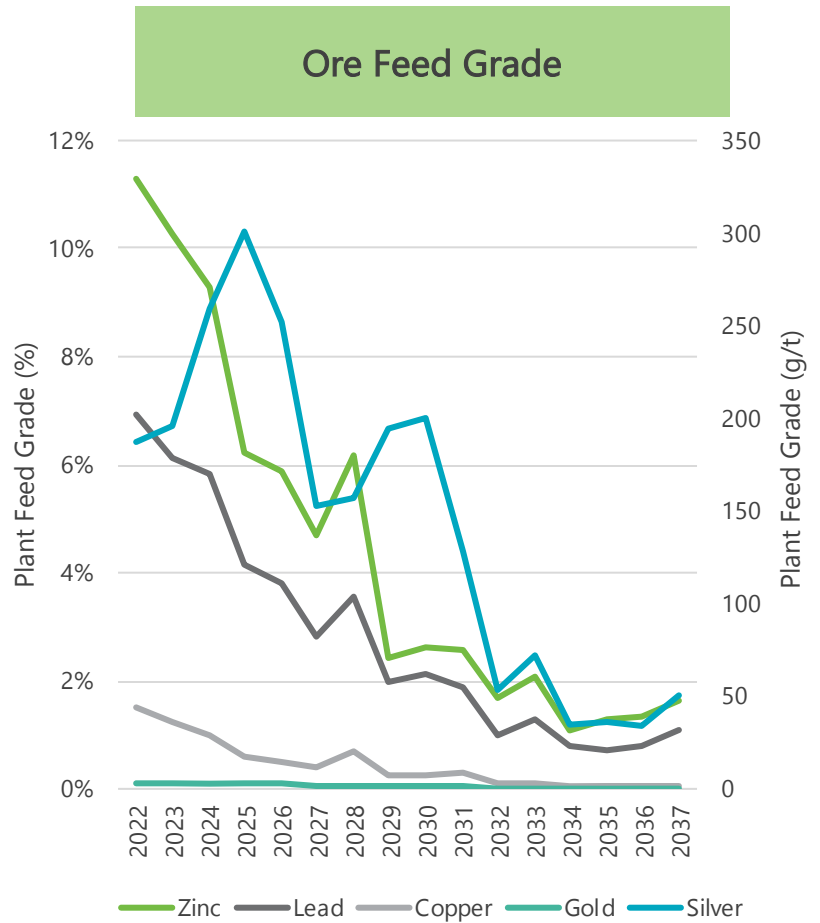


REAL VALUE CREATED

THE PROJECT IS ABLE TO MAXIMISE CASH FLOW FROM OPTIMUM GRADES IN THE EARLY STAGES OF MINING



Post Tax NPV (8)	US\$ 916.6 million
Post Tax IRR	107.4%
Post Construction Payback	8 Months
LoM Capital Expenditure*	US\$ 178.4 million
Operating Costs	US\$ 56.67 / tonne
*Includes 30% Contingency	

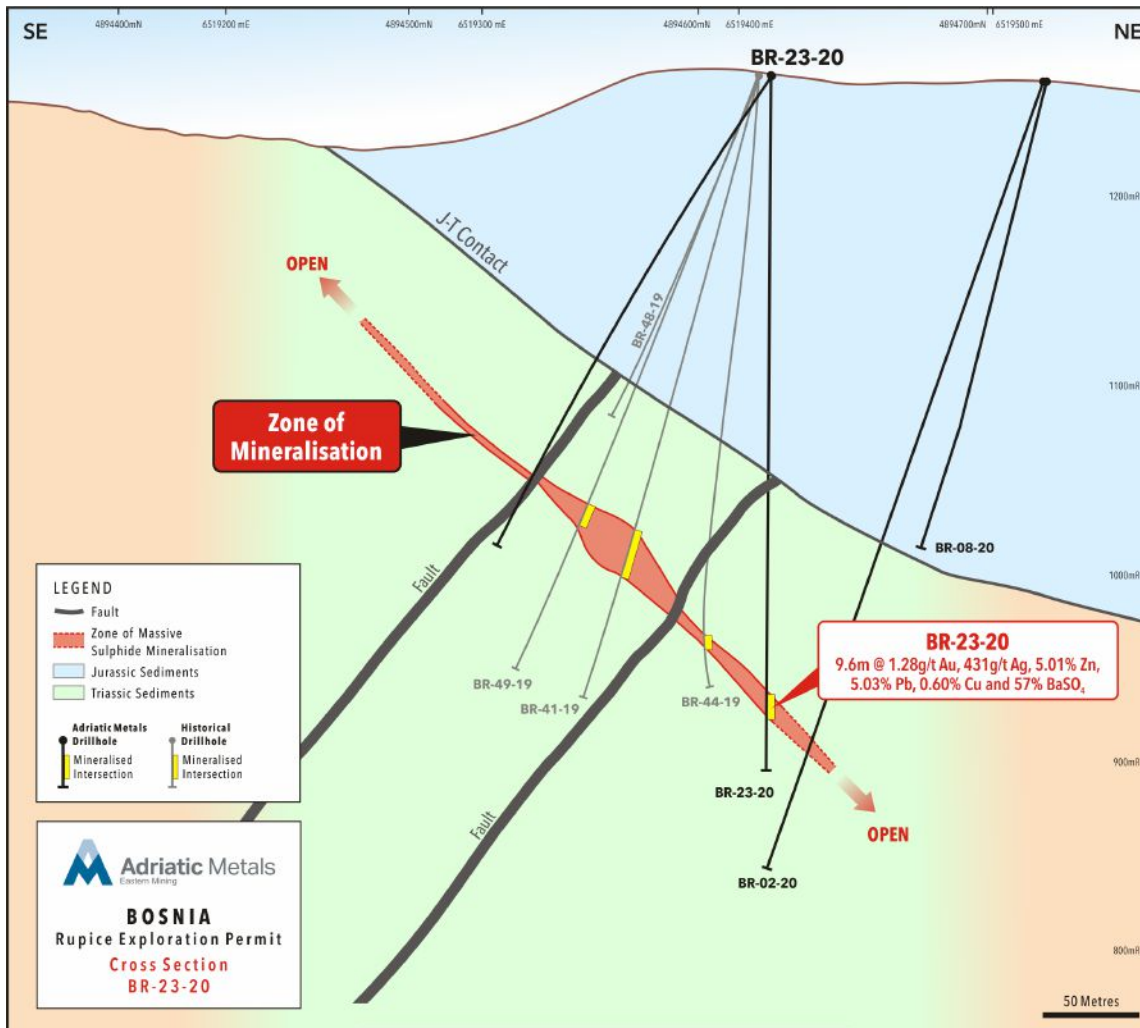


Metal	Silver (US\$/oz)	Gold (US\$/oz)	Zinc (US\$/t)	Lead (US\$/t)	Copper (US\$/t)	Barite CIF (US\$/t)	Antimony (US\$/t)
Price Assumption	17.2	1,440	2,500	2,000	6,500	155	6,500



RUPICE REGIONAL GROWTH

STRONG 2020 EXPLORATION PROGRAMME TO EXPAND TONNAGES AND CREATE ADDITIONAL VALUE



2020 DRILLING PROGRAMME

- BR-23-20 from our most recent drilling programme prior to the MRE update returned results of:

From (m)	Intv. (m)	Ag (g/t)	Au (g/t)	Zn (%)	Pb (%)	Cu (%)	BaSO ₄ (%)
329	9.6	431	1.28	5.01	5.03	0.60	57

- Exploration and hydrological drilling works continue on the Vares Silver Project with two rigs testing the mineralisation further southward at Rupice, and one at Veovaca drilling geotechnical and hydrological holes.
- More drillholes are planned for testing the extensions of Rupice deposit to the south and down-dip.

2019 DRILLING PROGRAMME

- BR-49-19 was the highest-grade intercept drilled at Rupice to date. Mineralisation still remains open down-dip to the south and to the north into previously untested ground outside of the current ore block model.

From (m)	Intv. (m)	Ag (g/t)	Au (g/t)	Zn (%)	Pb (%)	Cu (%)	BaSO ₄ (%)
244.7	11.3	406	4.37	16.1	9.8	1	50

SIGNIFICANT REGIONAL GROWTH

DYNAMIC EXPLORATION PROGRAMMES INITIATED TO EXPLORE REGIONAL TARGETS



JURASEVAC-BRESTIC & BOROVICA

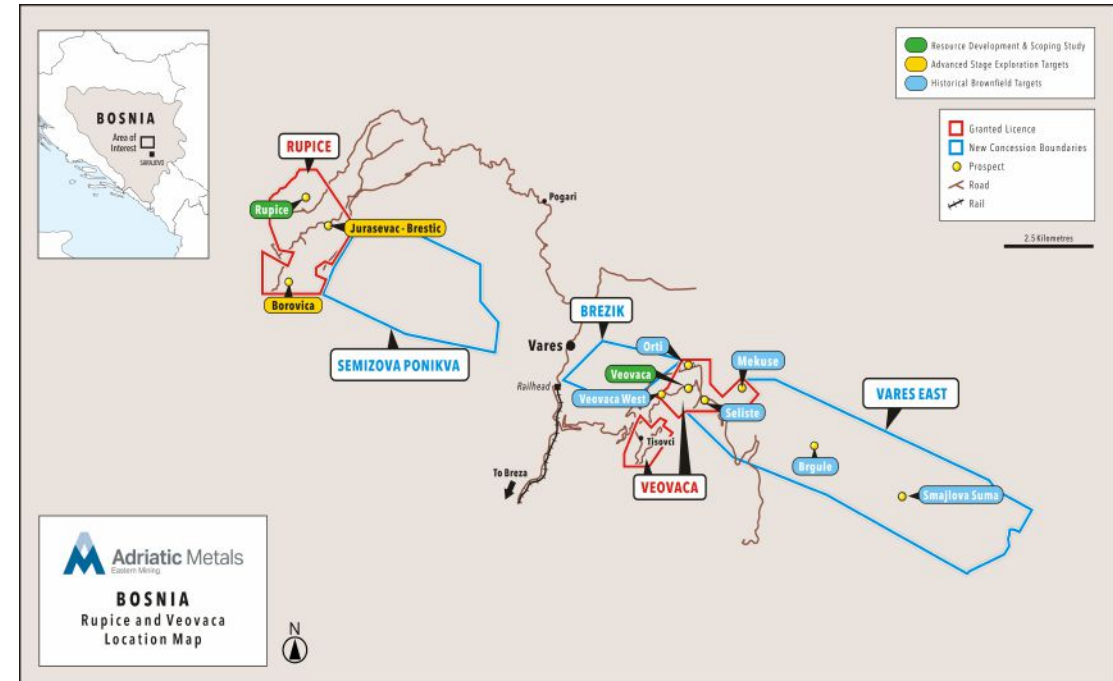
- Early results returning intersections of lead-zinc mineralisation
- Prospective 600m strike length IP target
- High grade grab and soil samples coinciding with Rupice
 - Highs up to 3.47 g/t Au, 339 g/t Ag, 19.4% Zn, 12.25% Pb, and 6.49% Cu

ORTI, SELISTE & VEOVACA WEST

- 450 soil samples collected at Orti and Seliste
- New discovery – Veovaca West
 - Stand out results of up to nearly 2% lead and zinc in soils
 - Historical workings over a 300m strike length sub-parallel to Veovaca workings

NEXT STEPS

- Drilling at Borovica has commenced while Orti and Veovaca West prospects will begin soon
- Regional mapping and soil sampling of highly prospective 12km corridor between Rupice in the west and Veovaca has finished





HISTORICAL RESOURCES AT KIZEVAK & SASTAVCI

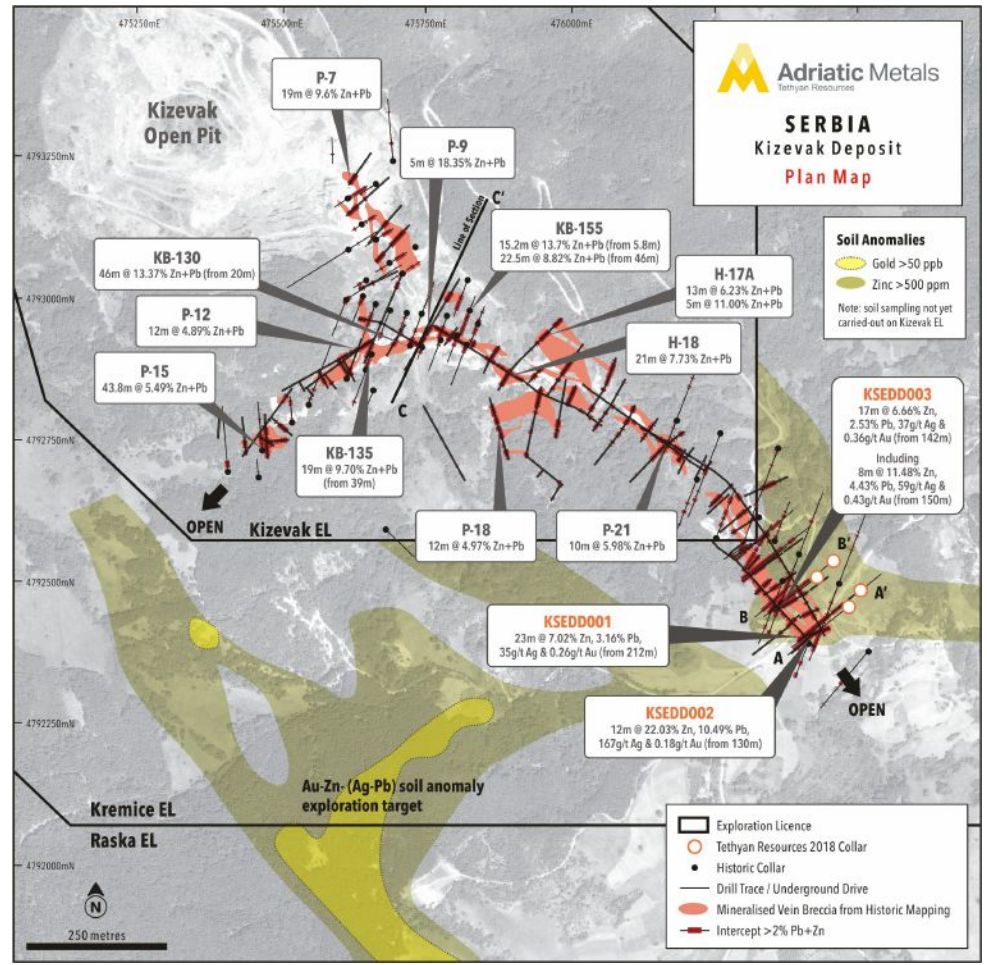
HISTORICAL RESOURCES AT KIZEVAK & SASTAVCI ADD CONFIDENCE TOWARDS MAIDEN JORC RESOURCE BY END-2020

	Category	Tonnes	Ag (g/t)	Zn (%)	Pb (%)
Non-JORC Compliant Classification for Kizevak	A+B+C1	4,402,227	54	5.43	3.62
	C2	1,800,000	36	5.04	2.23
	Total	6,202,227	48	5.32	3.22
Non-JORC Non-Compliant Classification for Sastavci	A+B+C1	357,642	45	5.56	2.07
	C2	1,000,000	25	3.50	1.90
	Total	1,357,642	30	4.04	1.94

The mineral resource estimate for the Kizevak-Sastavci project is a foreign estimate and is not reported in accordance with the JORC Code. A competent person has not done sufficient work to classify the foreign estimate as a mineral resource in accordance with the JORC Code. It is uncertain that following evaluation and/or further exploration work that the foreign estimates will be able to be reported as mineral resources in accordance with the JORC Code

OPEN PITTABLE RESOURCES

- Mineralisation close to surface which gives possible initial positive free cash flow
- Opportunity for low-strip ratio to maximise ore tonnages and revenues
- Favourable metallurgy may prove advantageous for Vares concentrate blending

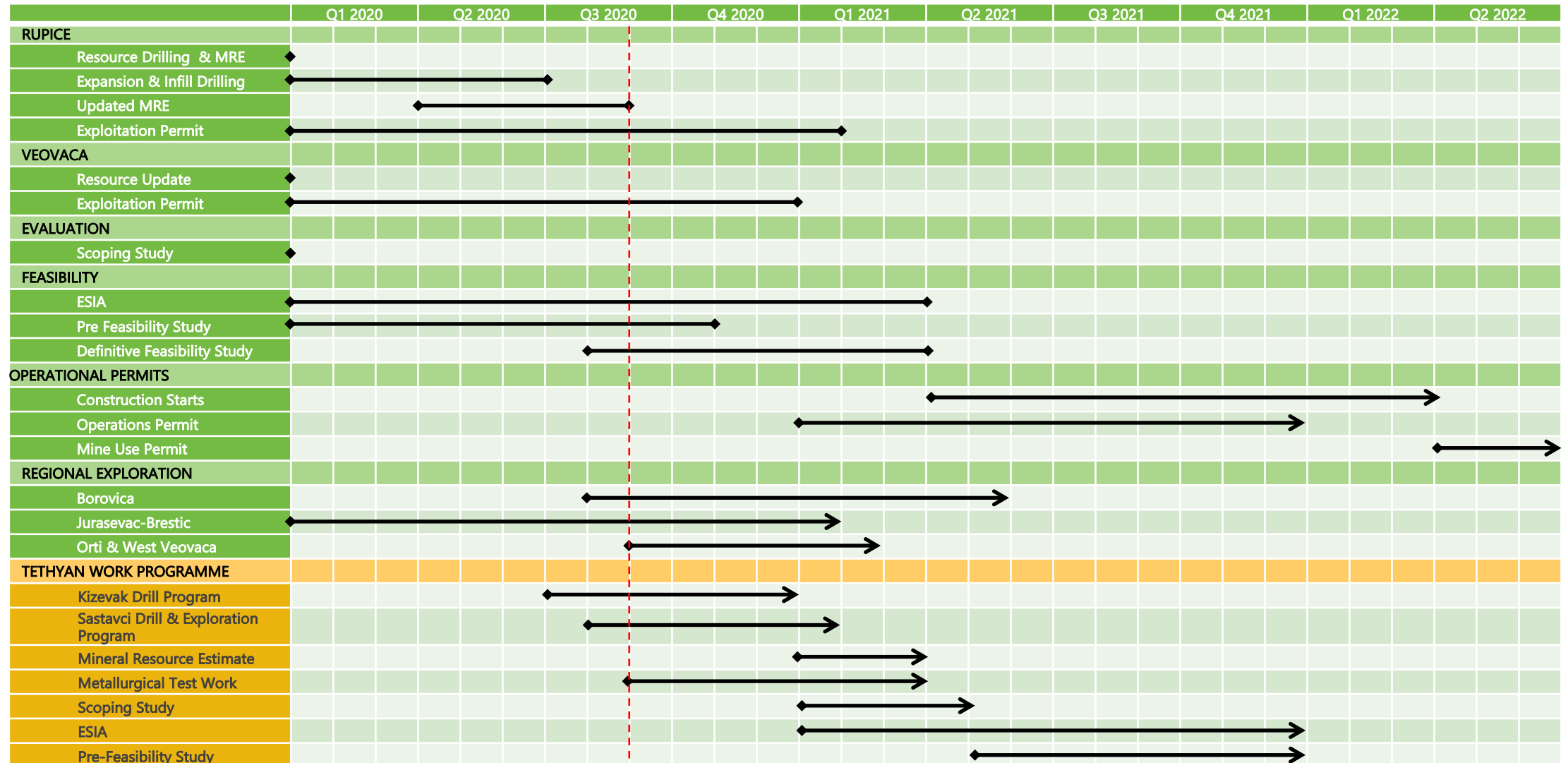


The foreign mineral resource estimate for the Kizevak-Sastavci project was first disclosed in accordance with listing rule 5.12 in Adriatic's announcement of 11 May 2020. Adriatic confirms that it is not in possession of any new information or data to the foreign estimate that materially impacts on the reliability of the estimate or Adriatic's ability to verify the foreign estimate as a mineral estimate in accordance with the JORC Code. The supporting information provided in the previous announcement continues to apply and has not materially changed. Historical drillholes are subject to confirmation drilling



SHORT TERM GOALS TO BRING VARES TO PRODUCTION

CONTINUING TO DELIVER ON MILESTONES TO MAXIMISE SHAREHOLDER RETURNS





BOSNIAN PERMITTING ROAD MAP - FMERI

FEDERAL MINISTRY OF MINING, ENERGY AND INDUSTRY

EXPLORATION PERMIT

- ✓ Concession Agreement
- ✓ Urban Use & Planning Permit
- ✓ Authorized Incorporated Company
- ✓ Exploration Report and Plan
- ✓ Land Access Agreement
- ✓ Topographical Maps

- ✓ Veovaca and Rupice
- ✓ Veovaca
- Yet to receive permits

EXPLOITATION PERMIT – VEOVACA & RUPICE

- ✓ Elaborat of Mineral Reserves
- ✓ Site Plan
- ✓ Equipment List
- ✓ Employee Qualifications
- ✓ Preliminary Water Permits
- ✓ Environmental Permit
- ✓ Land Use or Agreement with Land Owners
- Urban Planning and Use Permit

OPERATION PERMIT

- Exploitation Permit
- Main Mining Project Elaborate – Feasibility Study
- Permits for use of required Equipment
- Detailed Site Plan and Plant Engineering Design
- Environmental Permit & Water Management Permit
- Land Use or Acquisition Agreements

MINE USE PERMIT

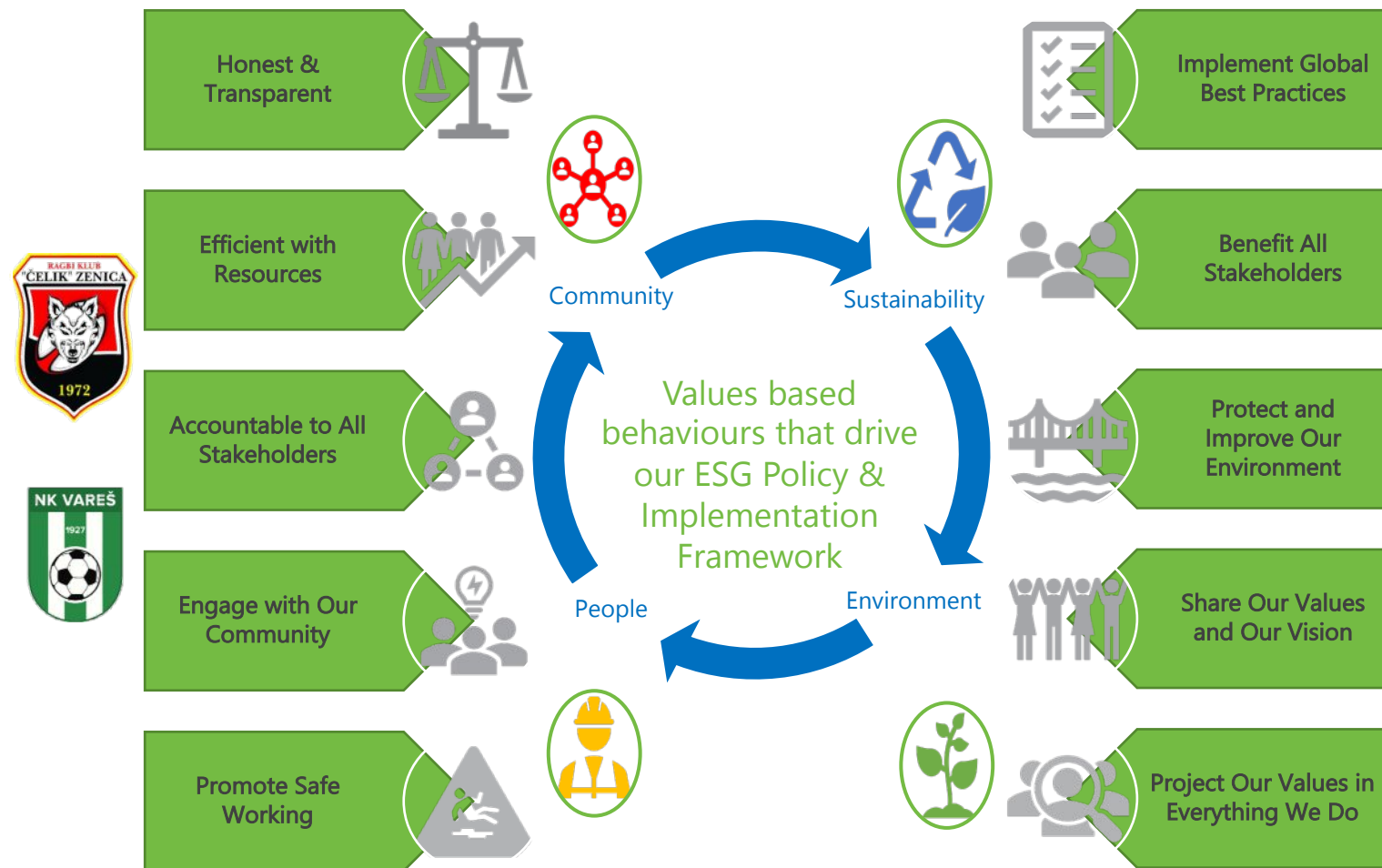
- Equipment and Facilities Lists
- Personnel Lists
- Equipment Inspection Procedures and Schedules
- Final Site Plan and Plant Design
- List of all subsequent permits covering prior phases and installed equipment



ACTIVE COMMUNITY & GOVERNMENT ENGAGEMENT

ESG FRAMEWORK BEING IMPLEMENTED TO GLOBAL BEST PRACTICE – VALUES BASED AND SUSTAINABILITY FOCUSED

- Recently announced as Bosnia's Best Foreign Investor in Energy & Mining
- An Information Centre and Public Liaison Committee in Vares has been established to provide the local community with company updates and the opportunity to discuss activity
- HR and Procurement policies being implemented to ensure economic and social development exceeds the direct project benefits
- International Environmental & Social Impact Assessment being conducted to identify historical issues and seek to rectify in partnership with government.
- Sponsorship of the of Art, Cultural and Sporting associations in the local community.
- Charitable Foundation being established to co-invest with local government in initiatives to enhance, education, health and environmental improvements.
- Critical Resource audit of ESG approach indicated strong community and government support for the project and company





WORLD CLASS BOARD

SUCCESSFUL TRACK RECORD & STRONG SHAREHOLDER ALIGNMENT

PAUL CRONIN

CEO and Managing Director

A financier with over 20 years of experience in corporate finance, investment banking, funds management, and commodity trading, with a strong European mining focus.

Founder of the company and major shareholder



Capital
Markets &
Corporate
Development

JULIAN BARNES

Non-Executive Director

A geologist with extensive experience in major exploration and development projects having a particularly strong focus on Balkan mining & development.

Audit & Risk Committee, Remuneration & Nomination Committee



Exploration
&
Development

MICHAEL RAWLINSON

Non-Executive Chairman

A financier with previous experience as the Global Co-Head of Mining and Metals at Barclays investment bank and helped found the boutique investment bank, Liberum Capital in 2007.

Remuneration Committee and Environmental, Social & Governance Committee



Corporate &
Social
Responsibility

PETER BILBE

Non-Executive Director

A mining engineer with 40 years international mining experience in gold, base metals and iron ore at the operational, CEO and board levels.

Audit & Risk Committee and Remuneration & Nomination Committee.



SANELA KARIC

Non-Executive Director

A lawyer with over 15 years' experience spanning corporate affairs, mergers & acquisitions and human resources. Currently the Executive Director for Legal Affairs and Human Resources at the Prevent Group, Bosnia's largest diversified industrial corporation.

Environmental, Social & Governance Committee



SANDRA BATES

Non-Executive Director

A commercial and strategic international lawyer with over 20 years' experience advising management teams and boards of both international and UK companies.

Remuneration & Nomination Committee and Environmental, Social & Governance Committee.



ADRIATIC CORPORATE SNAPSHOT

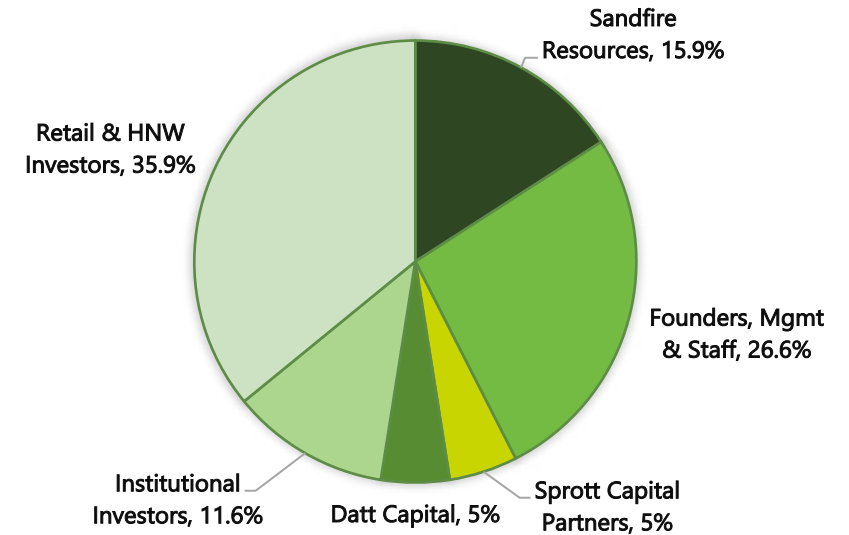


Share Price Performance Since IPO – ASX: ADT & LSE: ADT14



1. At 29 July 2020.
2. At 20 August 2020.
3. At 30 June 2020.
4. At 20 August 2020.

Shareholder Breakdown¹



Capital Structure²

Share Price	(£1.30) A\$2.40
Shares on Issue	182.1M
Market Cap (undiluted)	(£236.7M) A\$437.04M
Unlisted Options & Performance Rights	20.8M
Cash ³	(£9.7M) A\$17.4M
Debt	N/A
Enterprise Value	(£227.0M) A\$419.6M



FUNDAMENTALS OF ADRIATIC

SHARE PRICE HAS RISEN 1100% SINCE IPO AND STOCK STILL REMAINS AN INTEGRAL PART OF INVESTMENT PORTFOLIOS



Attractive economics
for both projects



Two high quality
mining jurisdictions
just 200km apart



Excellent
operational
synergies



Diversified portfolio
of development and
exploration assets in
the region



Low cost operating
environment



Robust funding
position



Well defined
permitting route to
production



Good regional
transport
infrastructure



Experienced team
working across both
projects



CONTACT DETAILS

Paul Cronin, CEO & Managing Director
Paul.Cronin@AdriaticMetals.com

Dominic Roberts, Head of Corporate Affairs
Dominic.Roberts@AdriaticMetals.com

Emma Chetwynd Stapylton
Emmacs@AdriaticMetals.com



APPENDICES

RUPICE – MRE

VEOVACA - MRE



31 August 2020

APPENDIX 1 - RUPICE



Rupice Mineral Resources, August 2020															
JORC Classification	Tonnes (Mt)	Grades							Contained metal						
		Ag (g/t)	Au (g/t)	Zn (%)	Pb (%)	Cu (%)	Sb (%)	BaSO ₄ (%)	Ag (Moz)	Au (koz)	Zn (kt)	Pb (kt)	Cu (kt)	Sb (kt)	BaSO ₄ (kt)
Indicated	9.5	176	1.6	4.9	3.1	0.5	0.2	29	54	500	466	294	52	22	2,732
Inferred	2.5	49	0.3	0.9	0.7	0.2	0.1	9	4	27	23	18	4	3	218
Total	12.0	149	1.4	4.1	2.6	0.5	0.2	25	58	526	488	312	56	24	2,949

Notes:

- Mineral Resources are based on JORC Code definitions.
- A cut-off grade of 50g/t silver equivalent has been applied.
- AgEq – Silver equivalent was calculated using conversion factors of 31.1 for Zn, 24.88 for Pb, 80.0 for Au, 1.87 for BaSO₄, 80.87 for Cu and 80.87 for Sb, and recoveries of 90% for all elements. Metal prices used were US\$2,500/t for Zn, US\$2,000/t for Pb, \$150/t for BaSO₄, \$2,000/oz for Au, \$25/oz for Ag, \$6500/t for Sb and \$6,500 for Cu.
- The applied formula was: $\text{AgEq} = \text{Ag(g/t)} * 90\% + 31.1 * \text{Zn(\%)} * 90\% + 24.88 * \text{Pb(\%)} * 90\% + 1.87 * \text{BaSO}_4\% * 90\% + 80 * \text{Au(g/t)} * 90\% + 80.87 * \text{Sb(\%)} * 90\% + 80.87 * \text{Cu(\%)} * 90\%$
- It is the opinion of Adriatic Metals and the Competent Persons that all elements and products included in the metal equivalent formula have a reasonable potential to be recovered and sold.
- Metallurgical recoveries of 90% have been applied in the metal equivalent formula based on recent and ongoing test work results.
- A bulk density was calculated for each model cell using regression formula $\text{BD} = 2.745 + \text{BaSO}_4 * 0.01793 + \text{Pb} * 0.06728 - \text{Zn} * 0.01317 + \text{Cu} * 0.1105$ for the halo domain, $\text{BD} = 2.7341 + \text{BaSO}_4 * 0.01823 + \text{Pb} * 0.04801 + \text{Zn} * 0.03941 - \text{Cu} * 0.01051$ for the fault zones and $\text{BD} = 2.7949 + \text{BaSO}_4 * 0.01599 + \text{Pb} * 0.05419 + \text{Zn} * 0.01169 + \text{Cu} * 0.06303$ for the low grade domain. Bulk density values were interpolated to the combined high-grade domain from 631 BD measurements.
- Rows and columns may not add up exactly due to rounding.

APPENDIX 2 - VEOVACA



Veovaca Mineral Resources, July 2019											
JORC Classification	Tonnes (Mt)	Grades					Contained metal				
		Ag (g/t)	Au (g/t)	Zn (%)	Pb (%)	BaSO ₄ (%)	Ag (Moz)	Au (koz)	Zn (kt)	Pb (kt)	BaSO ₄ (kt)
Indicated	5.3	50	0.1	1.6	1.0	16	9	14	83	55	860
Inferred	2.1	17	0.1	1.1	0.5	6	1	4	23	11	123
Total	7.4	41	0.1	1.4	0.9	13	10	18	106	66	984

Notes:

1. Mineral Resources are based on JORC Code definitions.
2. A cut-off grade of 0.6% ZnEq has been applied.
3. ZnEq was calculated using conversion factors of 0.80 for Pb, 0.08 for BaSO₄, 1.80 for Au and 0.019 for Ag, and recoveries of 90% for all elements. Metal prices used were US\$2,500/t for Zn, US\$2,000/t for Pb, US\$200/t for BaSO₄, US\$1,400/oz for Au and US\$15/oz for Ag.
4. The applied formula was: $ZnEq = Zn\% * 90\% + 0.8 * Pb\% * 90\% + 0.08 * BaSO_4\% * 90\% + 1.8 * Au(g/t) * 90\% + 0.019 * Ag(g/t) * 90\%$.
5. It is the opinion of Adriatic Metals and the Competent Persons that all elements and products included in the metal equivalent formula have a reasonable potential to be recovered and sold.
6. A bulk density was calculated for each model cell using regression formula $BD = 2.70855 + BaSO_4 * 0.01487 + Pb * 0.03311 + Zn * 0.03493$.
7. Rows and columns may not add up exactly due to rounding.